

Webtrend

More than ever, small businesses view their web sites as a way to interact with their customers and expand their business. However, many businesses still don't track or understand how well their web sites generate traffic or encourage visitors to view information, products or services. WebTrends Log Analyzer Series is the most powerful and easy-to-use web site analysis solution specifically designed for the small business. Offered on multiple platforms, Log Analyzer provides the classic WebTrends reports thousands of businesses around the world already rely upon.

The following link provides the list of filters that are recommended for the regional centers to use.

<http://www.p2rx.org/adminInfo/WRRCfilters.cfm>

The web developer needs to create a quarterly webtrend report.

January 1st
April 1st
July 1st
October 1st

After creating the reports, please update the websites for your regional center.

The following links shows example of some of the webtend reports that have been published.

<http://www.p2ric.org/about/webstats.cfm>

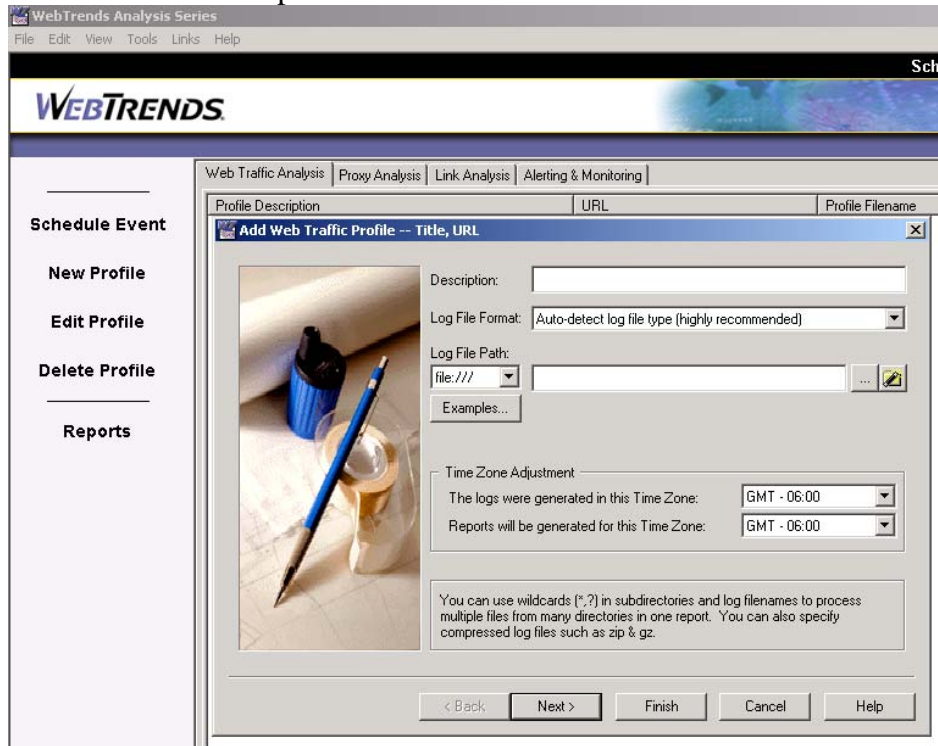
<http://www.p2rx.org/AdminInfo/toc.cfm>

Useful links:

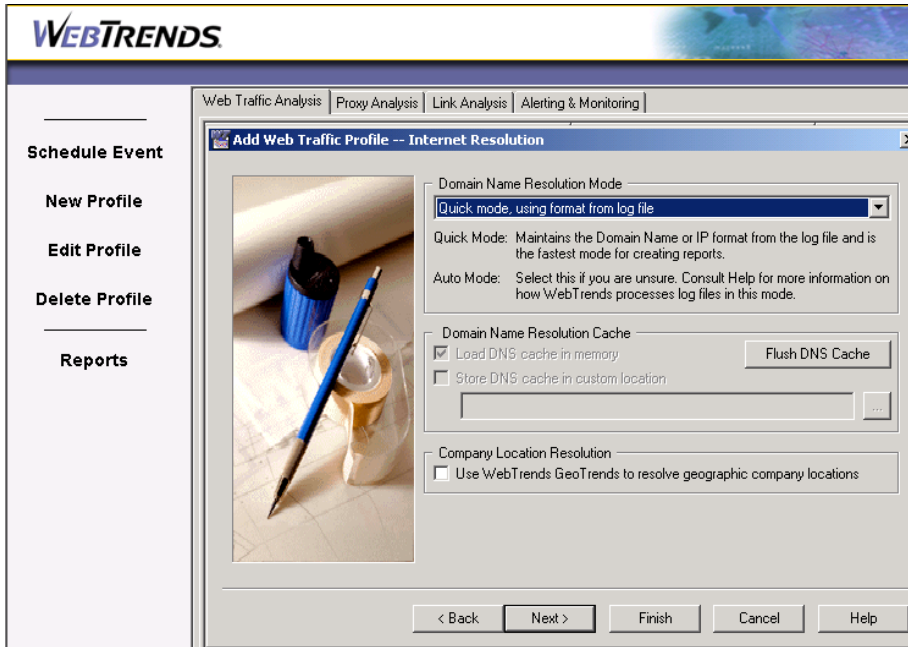
<http://www.netiq.com/products/log/default.asp>

Steps to set up the profile and filters

1. You will need to create a profile for you to generate a webtrend report.
2. Please click on New profile

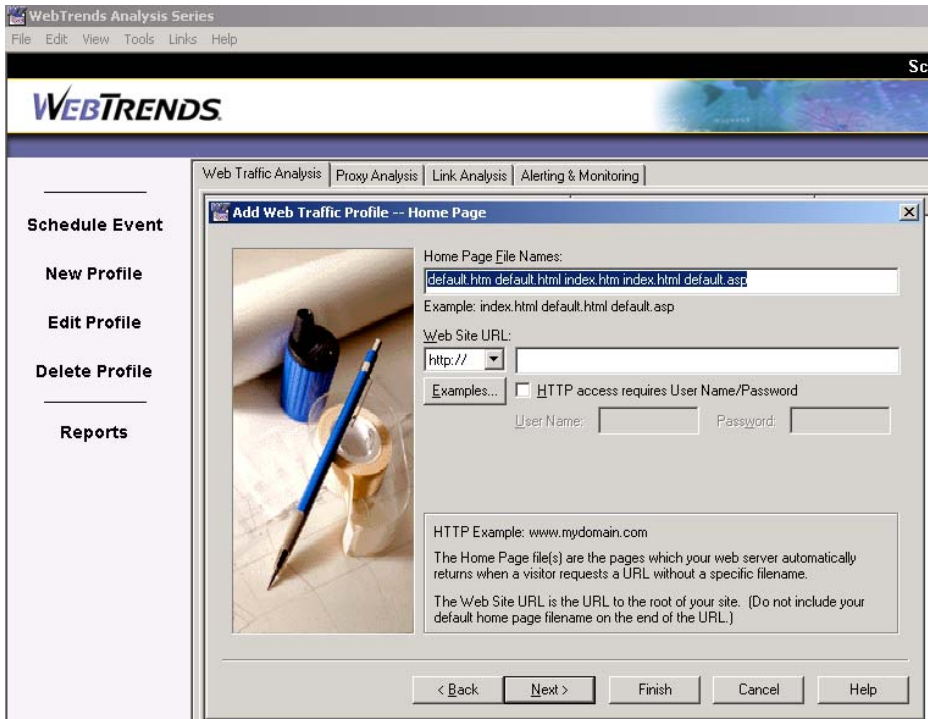


3. Examples for description: P2RX, P2RIC, P2RIC topic hubs etc
4. Log files are located in your server. If you can not locate it, please contact your network administrator.
5. Click Next



6. Please leave it as Quick mode, using format from logfile.

7. Click Next

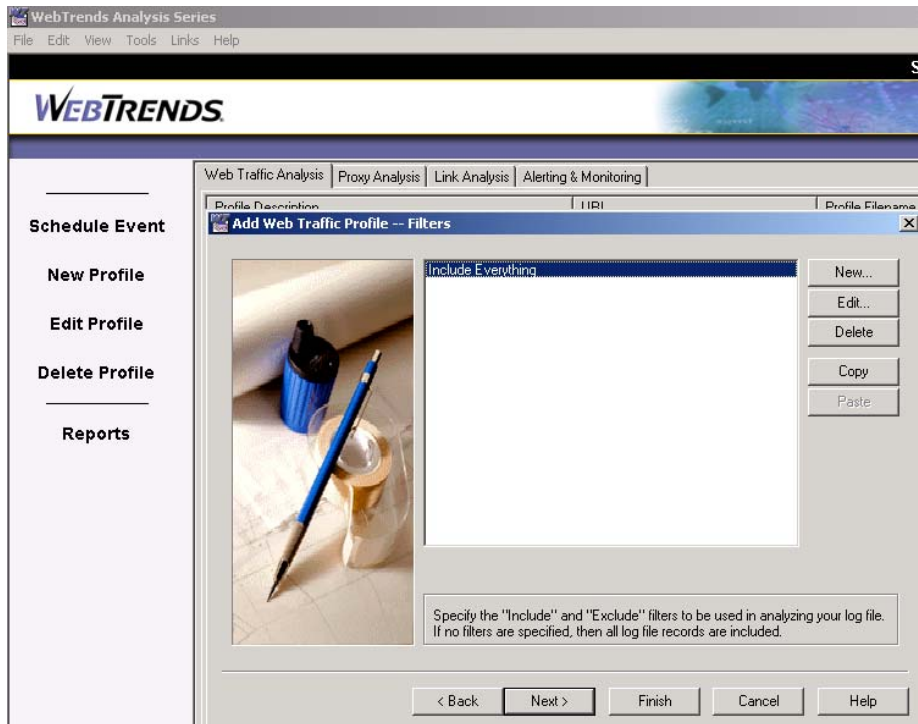


8. It is recommended to use the default values for home page file names

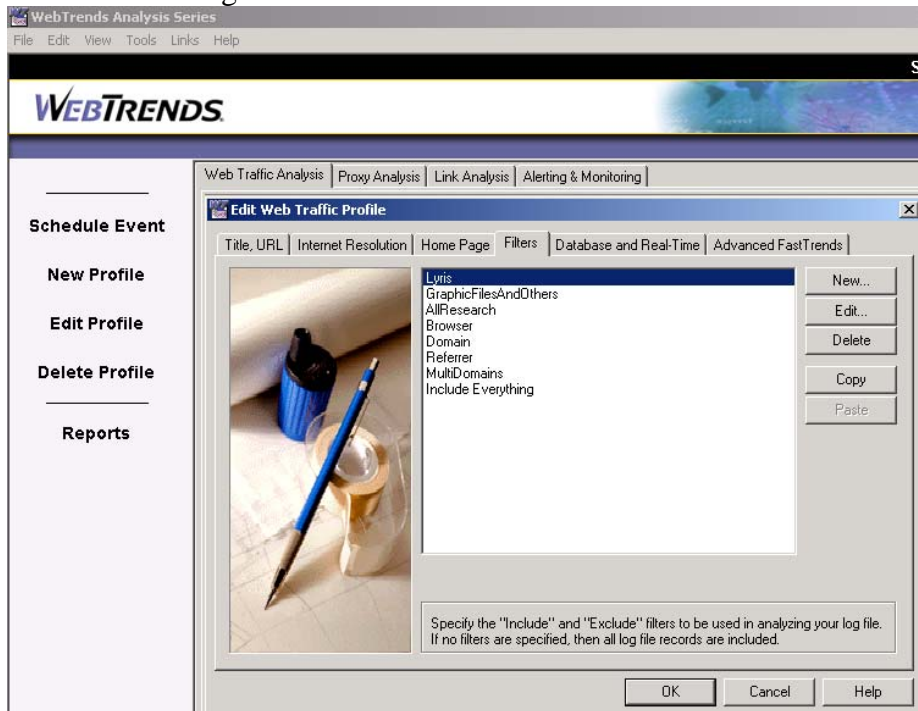
9. Please provide the website URL.

10. Click next

11. You will need to enter all the filters on the next screen.

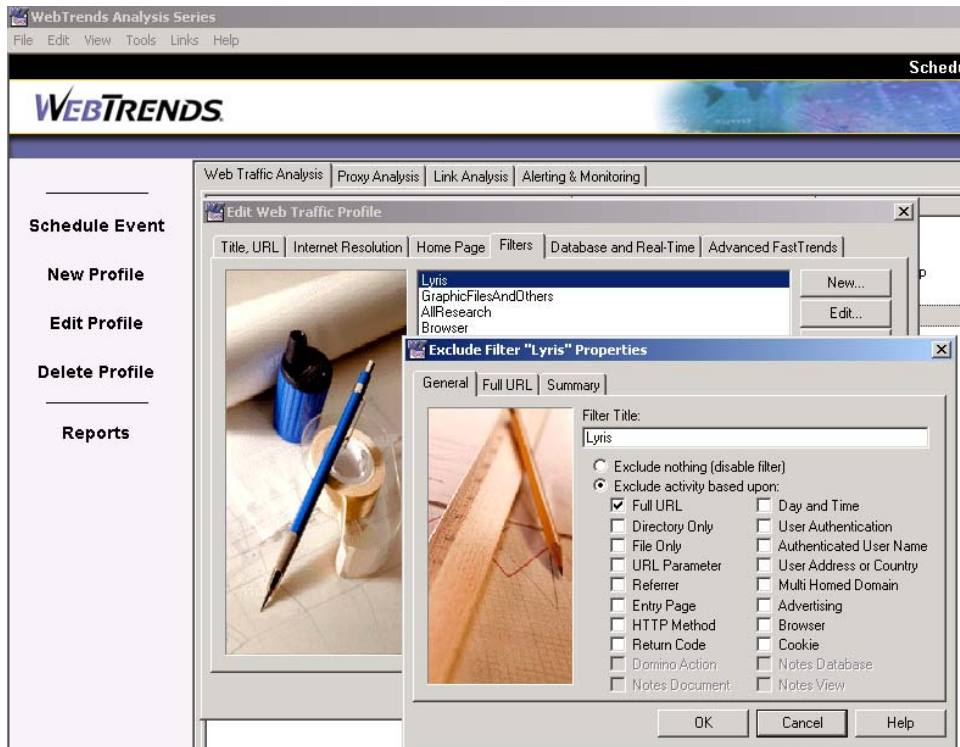


12. The following screen shows the list of filters that P2RIC center have used.



13. To enter new filters, click on New and follow the steps.

14. The following screens will show you the steps to enter the filters.



Note: Please do not try to add the filters items in one filter. Please try to make it generic so that it is easier to make changes if needed.

15. Please try to find an item on the exclude activity based upon screen that best fits the usage of the filter.

16. Summary is automatically generated by the software.

17. The following screens will show some of the filters for GraphicFilesAndOthers.

WebTrends Analysis Series
File Edit View Tools Links Help

WEBTRENDS

Web Traffic Analysis | Proxy Analysis | Link Analysis | Alerting & Monitoring

Edit Web Traffic Profile

Title, URL | Internet Resolution | Home Page | **Filters** | Database and Real-Time | Advanced FastTrends

Exclude Filter "GraphicFilesAndOthers" Properties

General | **File** | Summary

Filter Title:
GraphicFilesAndOthers

Exclude nothing (disable filter)
 Exclude activity based upon:

<input type="checkbox"/> Full URL	<input type="checkbox"/> Day and Time
<input type="checkbox"/> Directory Only	<input type="checkbox"/> User Authentication
<input checked="" type="checkbox"/> File Only	<input type="checkbox"/> Authenticated User Name
<input type="checkbox"/> URL Parameter	<input type="checkbox"/> User Address or Country
<input type="checkbox"/> Referrer	<input type="checkbox"/> Multi Homed Domain
<input type="checkbox"/> Entry Page	<input type="checkbox"/> Advertising
<input type="checkbox"/> HTTP Method	<input type="checkbox"/> Browser
<input type="checkbox"/> Return Code	<input type="checkbox"/> Cookie
<input type="checkbox"/> Domino Action	<input type="checkbox"/> Notes Database
<input type="checkbox"/> Notes Document	<input type="checkbox"/> Notes View

OK Cancel Help

New... Edit... Delete Copy Paste

ing your log file.

WebTrends Analysis Series
File Edit View Tools Links Help

WEBTRENDS

Web Traffic Analysis | Proxy Analysis | Link Analysis | Alerting & Monitoring

Edit Web Traffic Profile

Title, URL | Internet Resolution | Home Page | **Filters** | Database and Real-Time | Advanced FastTrends

Exclude Filter "GraphicFilesAndOthers" Properties

General | **File** | Summary

Files:
*.gif *.jpg *.jpeg *.png *.css *.inc *.js *.jpe *.wmz *.dll *.cl

Example: *.htm *.html *.txt

Also Exclude Requests To Home Pages
 Case Sensitive

Enter the files or file types that you want to include or exclude. Use spaces to separate multiple entries. Put quotes around values containing spaces. You may use asterisks (*) as wildcards.

Examples...

OK Cancel Help

New... Edit... Delete Copy Paste

ing your log file.